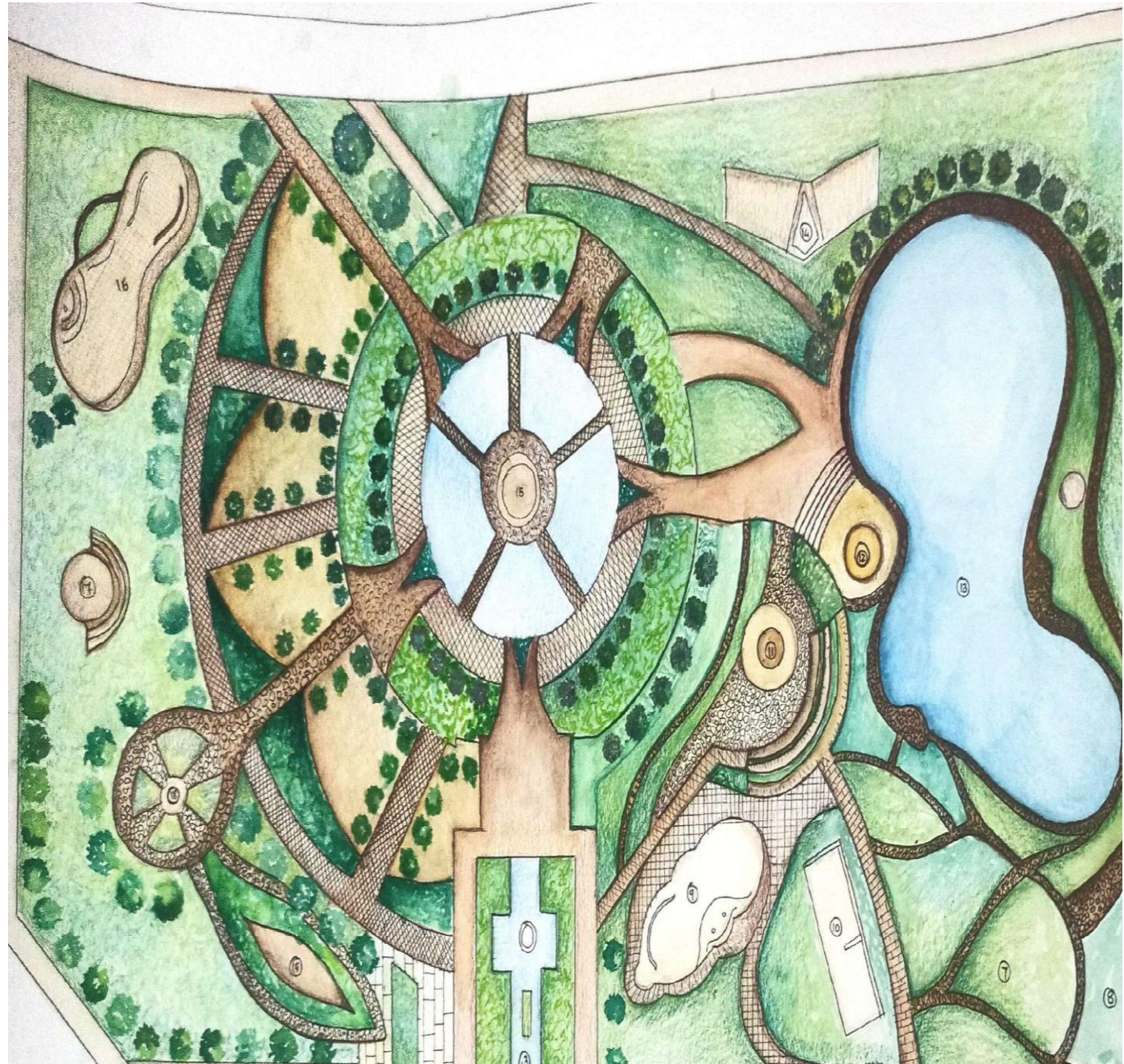


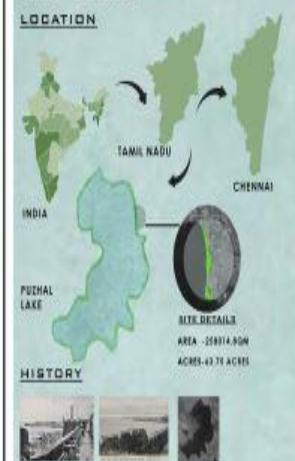
Students will engage in a comprehensive exploration of **planting systems**, **horticulture**, and **landscape construction** as they develop innovative design solutions. Through a series of landscape design studio projects, students will create detailed **landscape construction sheets** that showcase their understanding of both aesthetic principles and functional, sustainable planting systems. The projects will focus on integrating horticultural knowledge with design creativity, allowing students to develop planting schemes that enhance environmental quality while meeting practical needs. Students will also be required to produce comprehensive design documents, including planting plans, technical drawings, and material specifications, demonstrating a deep understanding of plant selection, soil management, irrigation systems, and construction techniques. The outcome should reflect a holistic approach to landscape architecture, where form, function, and sustainability converge.



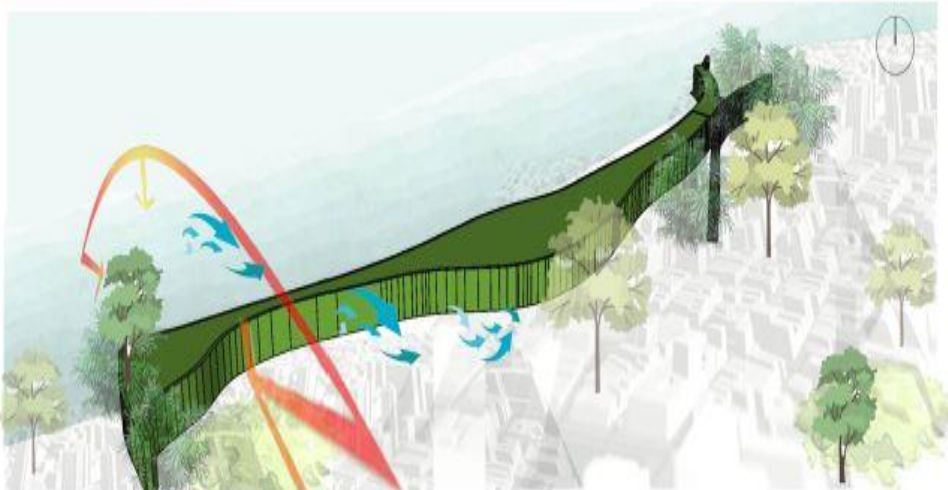
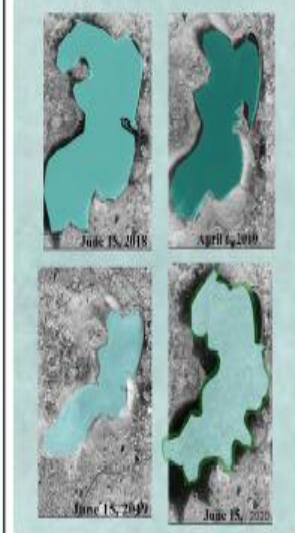


# WHERE LAKE MEETS LANDSCAPE

## SITE - DATAS



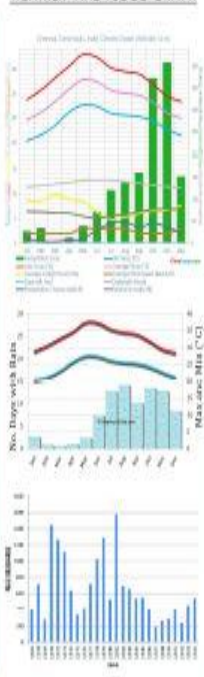
The Puzhal reservoir was built in 1876 during the British rule in Puzhal, Chennai. The reservoir was originally a small tank with a capacity of 500 million cubic feet (mcf) and two masonry weirs, built using locally available laterite stones, then functioned as surplus weirs to release excess water from the water body.



## SWOT ANALYSIS

<b>S</b>	Strategic Location
<b>W</b>	Accessibility from 50m wide road throughout its stretch on side and puzhal river on the other side.
<b>O</b>	Excellent connectivity
<b>T</b>	Less biodiversity
	tourism and inland waterways
	River stretch can act as an integral part of landscape
	over human attraction might increase the level of pollution to site.
	enhancing the biodiversity, restoring the lost natural habitat

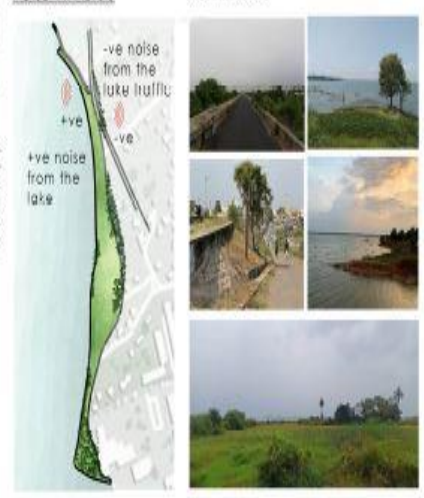
## WEATHER AND FLOOD GRAPH



## WIND ANALYSIS

The wind direction depicts that for around 8 months of the year the site experiences winds coming from southwest direction, while in winter the winds tend to blow from the northern direction. The site landscape will be planned taking sun path into consideration as well.

## NOISE ANALYSIS



## SITE PHOTOS



# WHERE LAKE MEETS LANDSCAPE

## SITE ANALYSIS



## USER CLASSIFICATION ACCORDING TO AGE GROUP



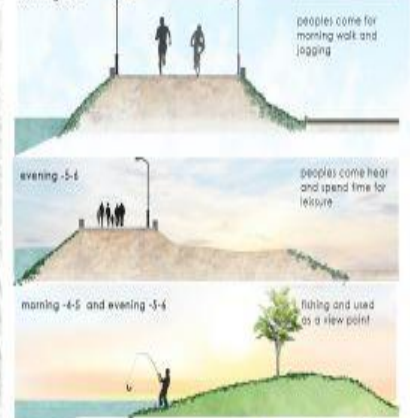
## VIEWS IN AND TO THE SITE



## CIRCULATION



## ACTIVITY MAP



## FLORA AND FAUNA









CONCEPT - SENSE OF HUMAN

In urban environments, flyovers are often seen as dead or neglected spaces. However, by activating such spaces through innovative design, we can transform them into vibrant public realms. This project focuses on creating a sensory garden under a flyover, reimagining a typically underutilized space into a dynamic, inclusive area that stimulates the five human senses—sight, sound, smell, touch, and taste.

By considering these sensory aspects, the design aims to create an immersive, multi-sensory experience that enhances urban life, offering a retreat from the hustle and bustle of city surroundings. This approach not only revives neglected areas but also promotes well-being, social interaction, and environmental awareness.

These sensory elements in landscape design aim to create a holistic and immersive experience, transforming the space beneath a flyover into a welcoming, multi-sensory environment that contrasts with the otherwise industrial surroundings.

**Sight**  
Bright, colorful plantings and art installations transform the space, creating a visually stimulating environment. Lighting features add to the aesthetic at night, enhancing safety and ambiance.

**Smell**  
Auditory Soothing: Water features and rustling plants, like bamboo or wind chimes, mask urban noise, providing a calming auditory experience that brings nature's tranquility into the space.

**Touch**  
Edible Engagement: Edible plants, like strawberries and herbs, allow visitors to engage through taste, creating a sense of nourishment and connection with the landscape, while promoting community interaction.

**Taste**  
Tactile Exploration: Various textures—smooth leaves, rough bark, and soft grasses—encourage visitors to interact with the landscape through touch, making the space more dynamic and engaging.

**Sound**  
Fragrant Atmosphere: Aromatic plants such as lavender and gardenia fill the air with pleasant scents, creating a relaxing and inviting atmosphere that engages visitors as they move through the space.



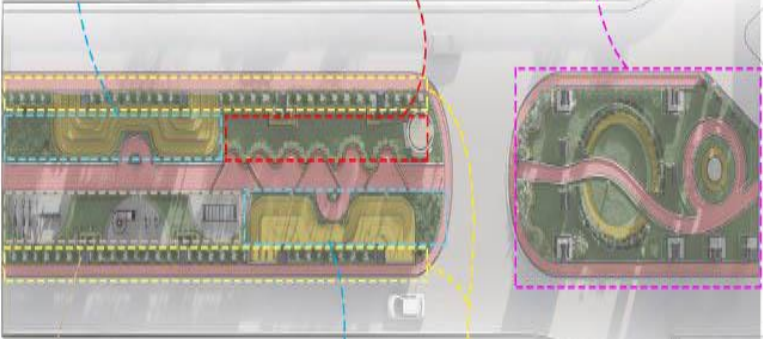
**TOUCH**  
Varied textures in seating, plant life, and surfaces encourage tactile exploration, making the space interactive.



**SMELL**  
Fragrant flowers and herbs engage the sense of smell, creating a calming and pleasant environment.



**SIGHT**  
The use of vibrant plantings, art installations, and lighting enhances the visual appeal and transforms the gray, industrial environment into a colorful and lively space.



**TASTE**  
Edible plants or fruit trees can invite people to engage with the space through taste, offering a sense of nourishment and community.



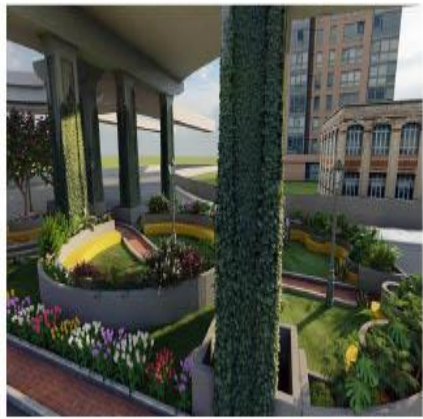
**TOUCH**  
Varied textures in seating, plant life, and surfaces encourage tactile exploration, making the space interactive.



**SOUND**  
Strategically placed water features, wind chimes, or ambient music installations introduce soothing sounds that mask the noise of the city.



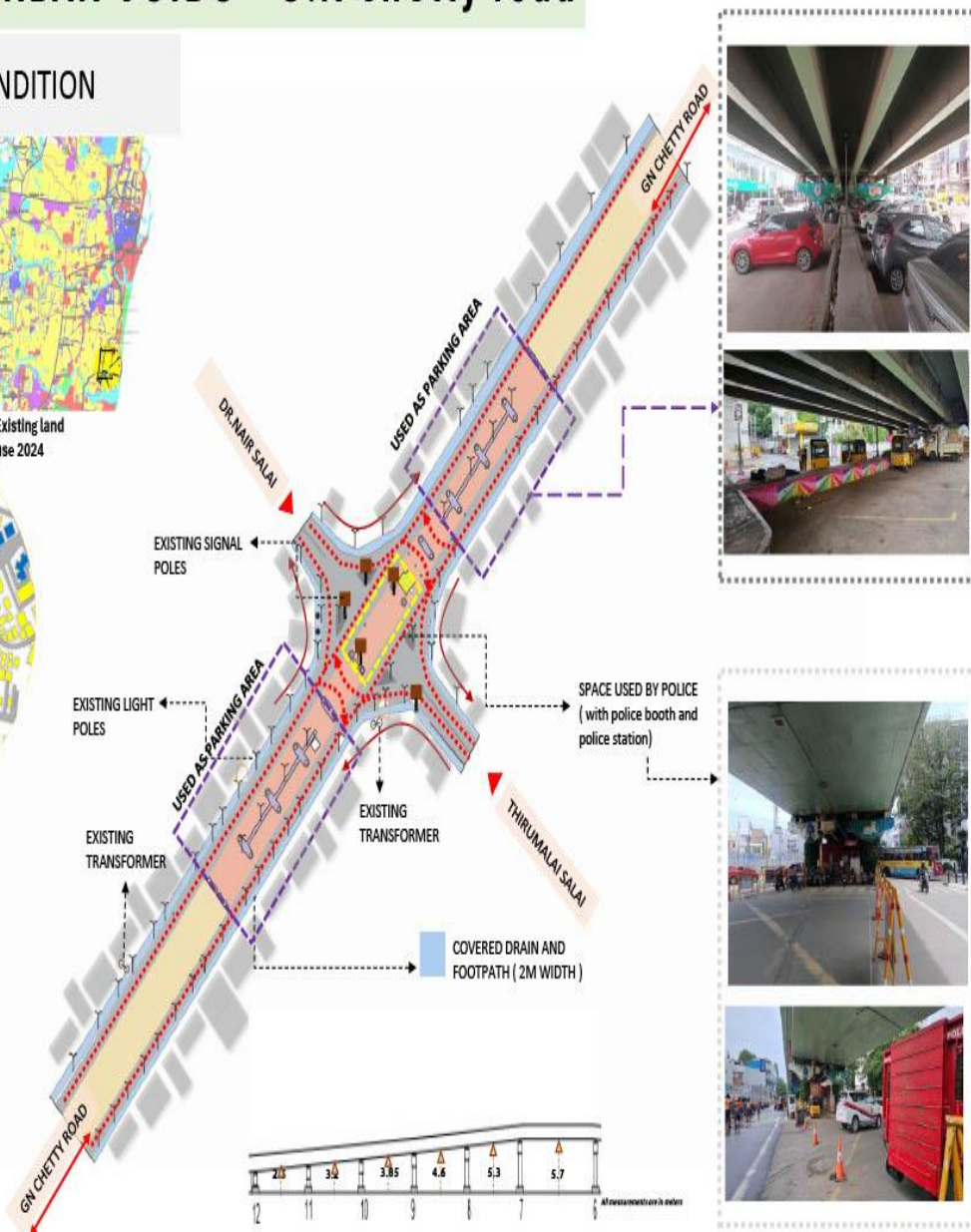
PROPOSED VIEWS





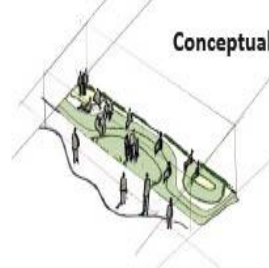
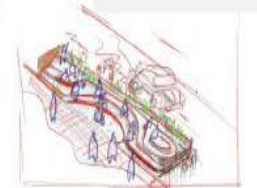
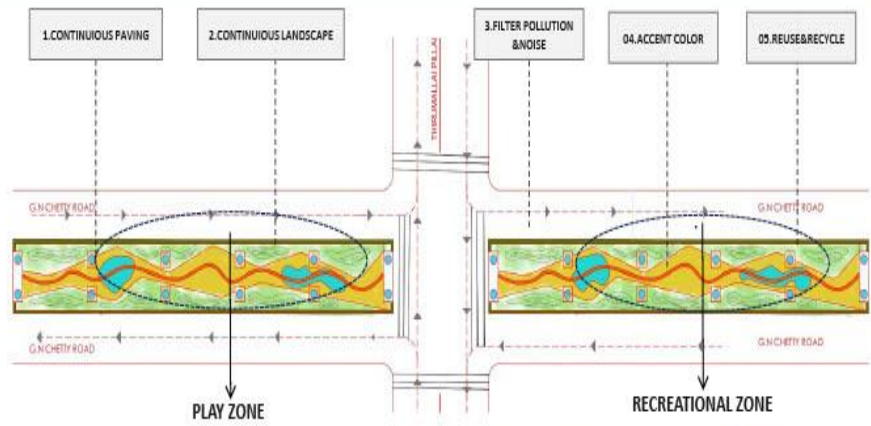
# VIBRANT URBAN VOIDS – G.N chetty road

## EXISTING SITE CONDITION



# VIBRANT URBAN VOIDS – G.N chetty road

## PROPOSED DESIGN



Conceptual Sketches

## Master Plan



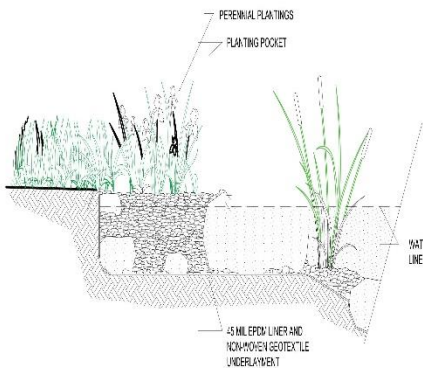
Section-AA



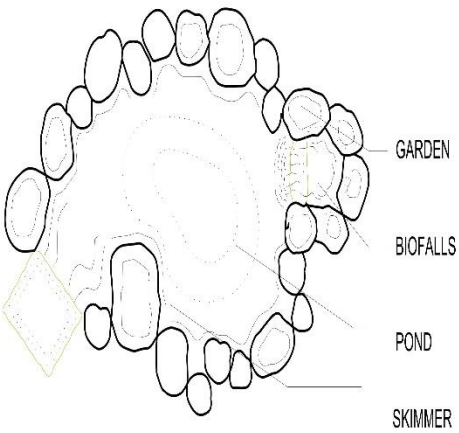


# ROCK POND

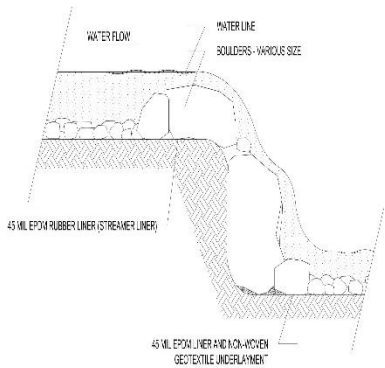
When water flows over the earth, it strips the soil, exposes the rocks and gravel below, and creates waterfalls. A rock pond attempts to recreate this natural landscape, although on a much smaller scale.



ELEVATION

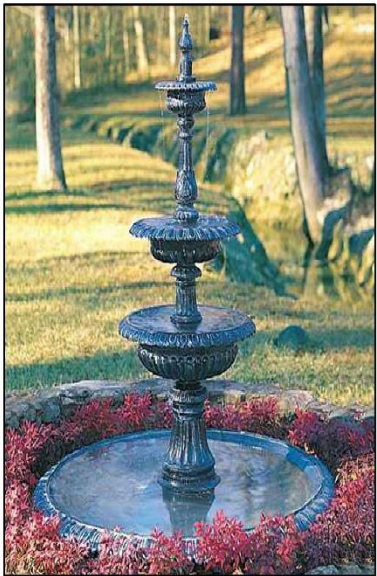
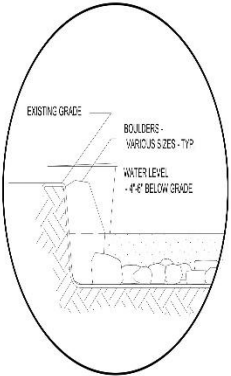
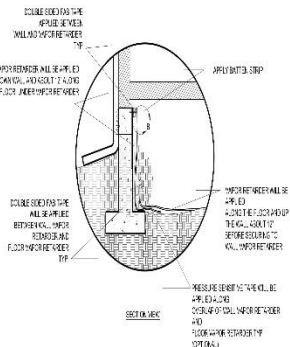


TOP VIEW



SECTION

# DETAILS



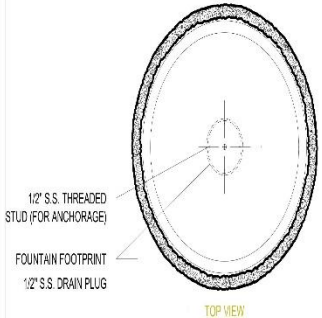
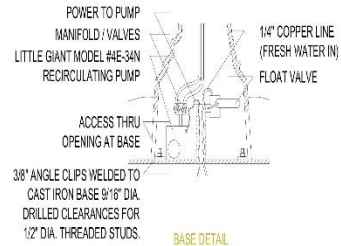
# WATER FOUNTAIN

## MATERIAL STUDY

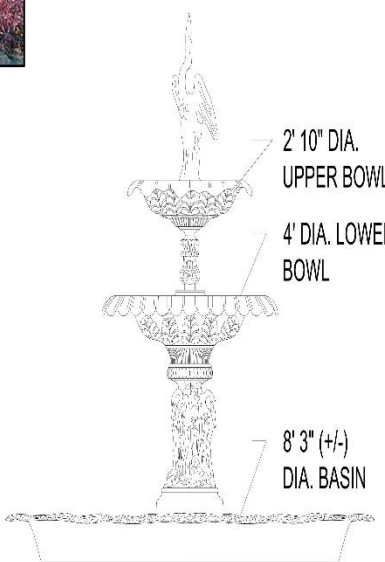


## BRASS

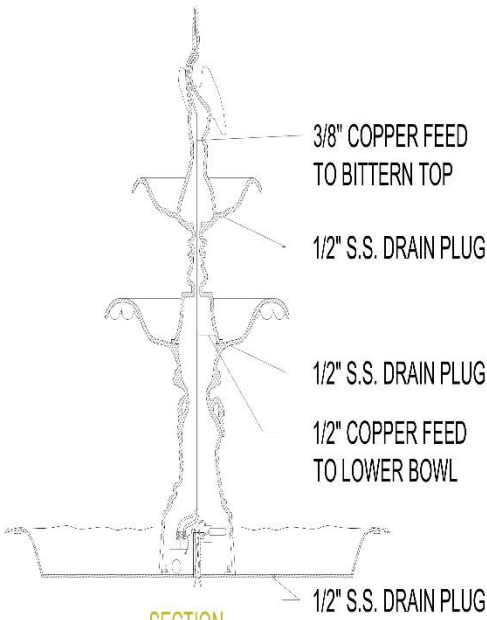
Brass will not rust. Moisture on brass causes a chemical reaction that gives brass its verdigris patina. An outdoor setting will only enhance the finish of your piece.



TOP VIEW



SIDE VIEW

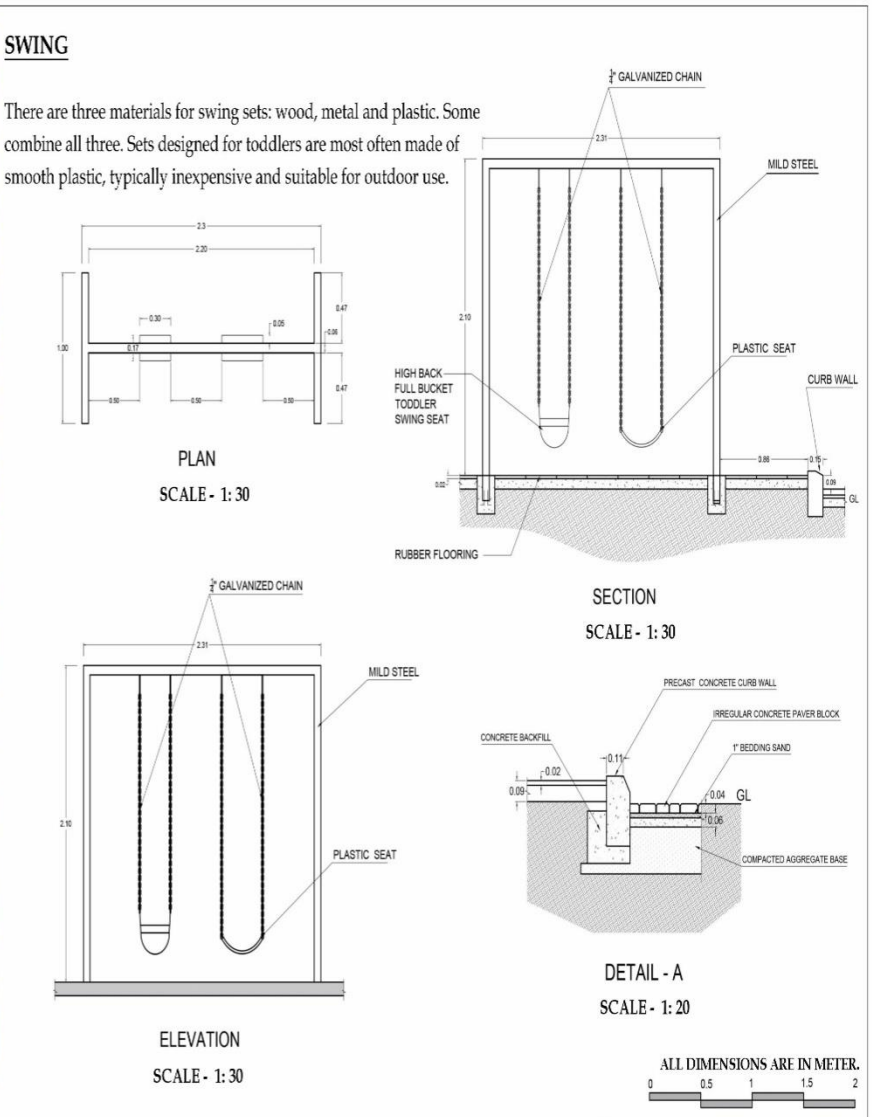


SECTION





SHEET NO:	TERRACE LANDSCAPING	NAME : SHEBI S
DATE: 19-04-2023		REG NO: MR2232
SUBJECT:		M.Arch Landscape
ADVANCED LANDSCAPE CONSTRUCTION II		1st Year; 2nd Sem
		Dr. M.G.R Educational & Research Institute



SHEET NO:	PLAY AREA EQUIPMENT	NAME : SHEBI S
DATE: 19-04-2023		REG NO: MR2232
SUBJECT:		M.Arch Landscape
ADVANCED LANDSCAPE CONSTRUCTION II		1st Year; 2nd Sem
		Dr. M.G.R Educational & Research Institute